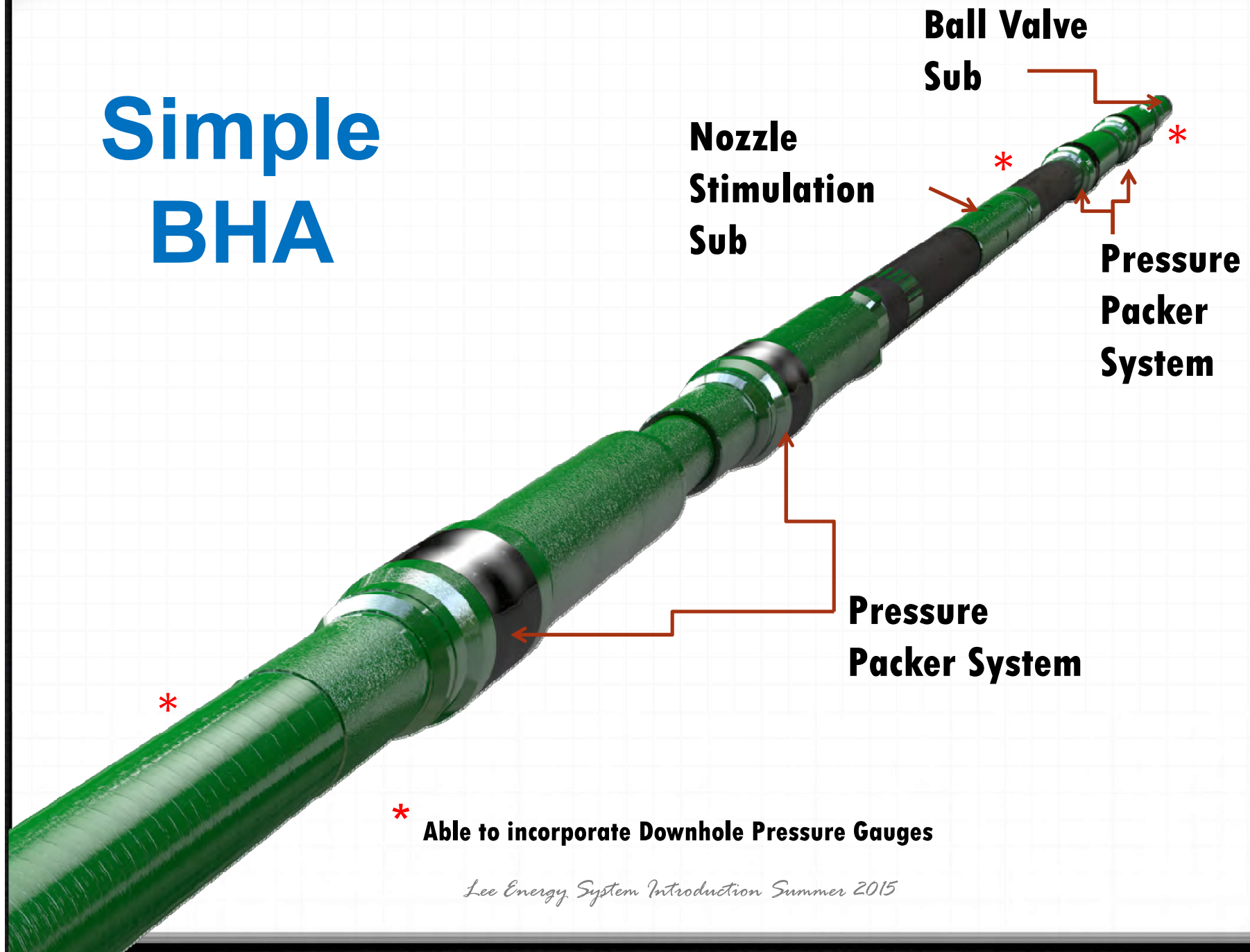


**LEE
ENERGY
SYSTEMS**

**Simple Designs That
Simply Work!**

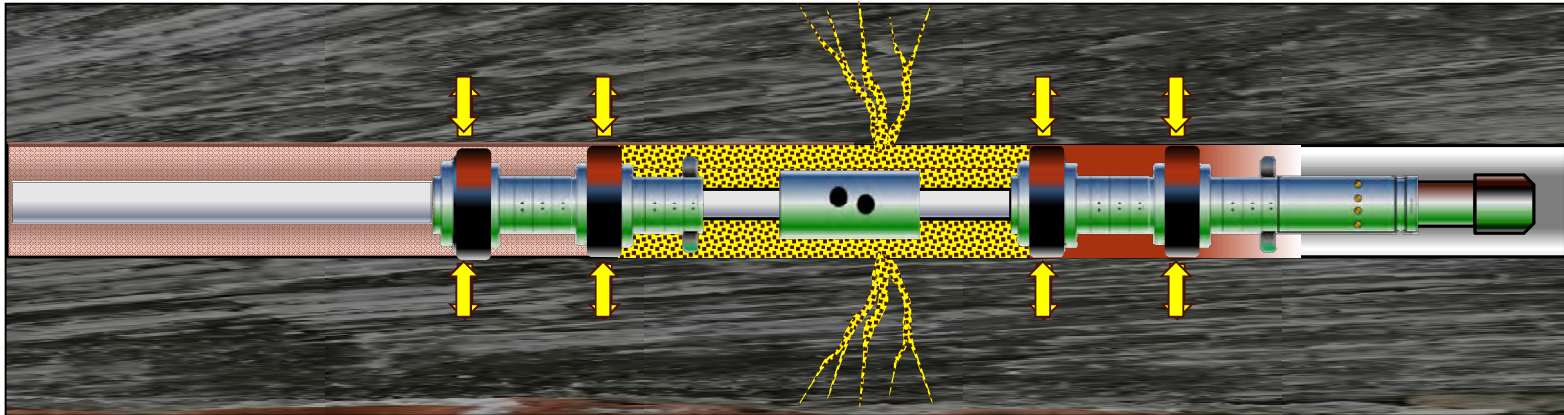
Lee Energy System Introduction Summer 2015

Simple BHA



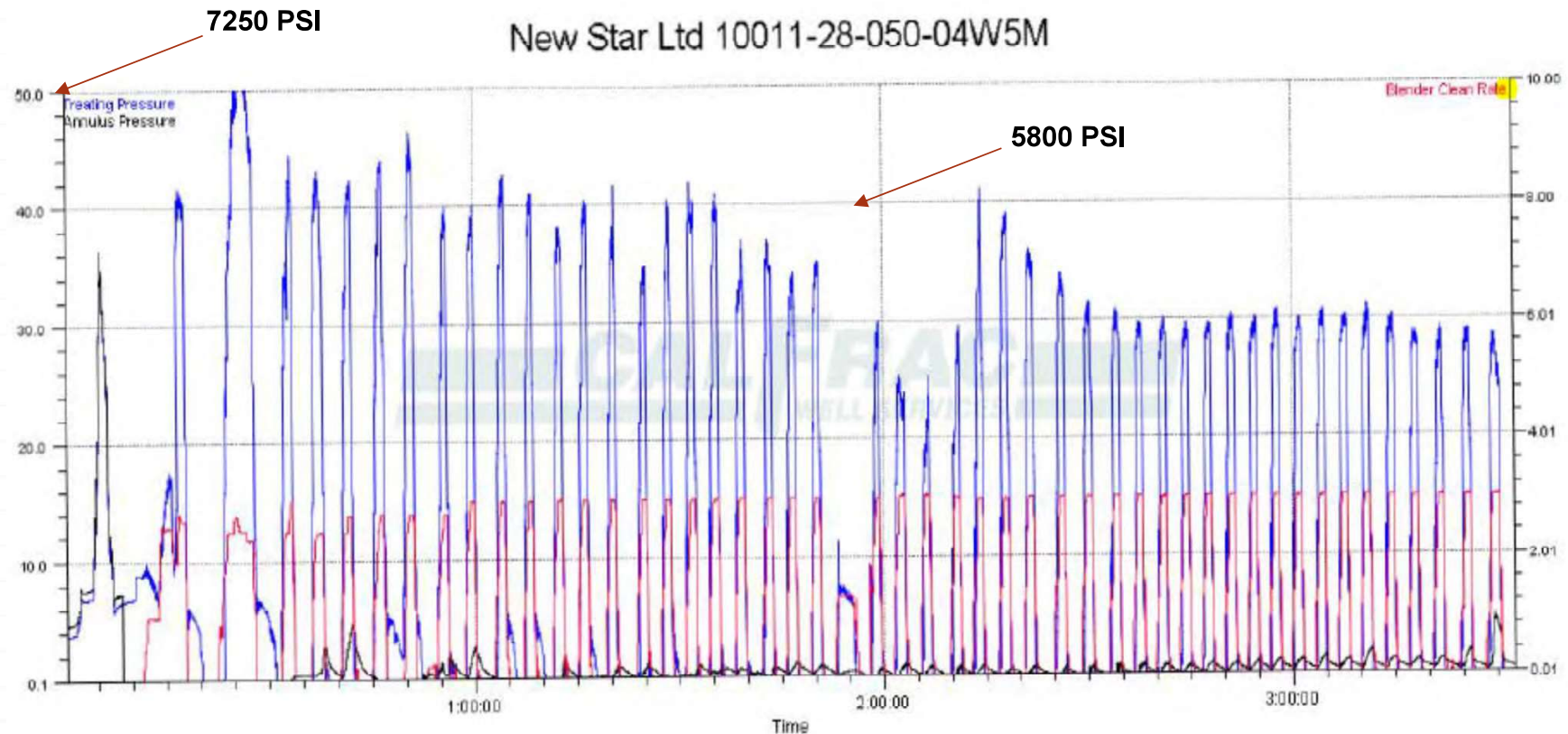
Lee Energy System Introduction Summer 2015

Speed Squeeze Run Procedure



- Run UltraFX OH to Depth
- Begin Pumping (Pressure Drop Across Nozzles Stim Sub causes Packers to Engage)
- Start Pumping Your Frac/Stimulation
- Stop Pumping, Packer Release and Move to Next Interval

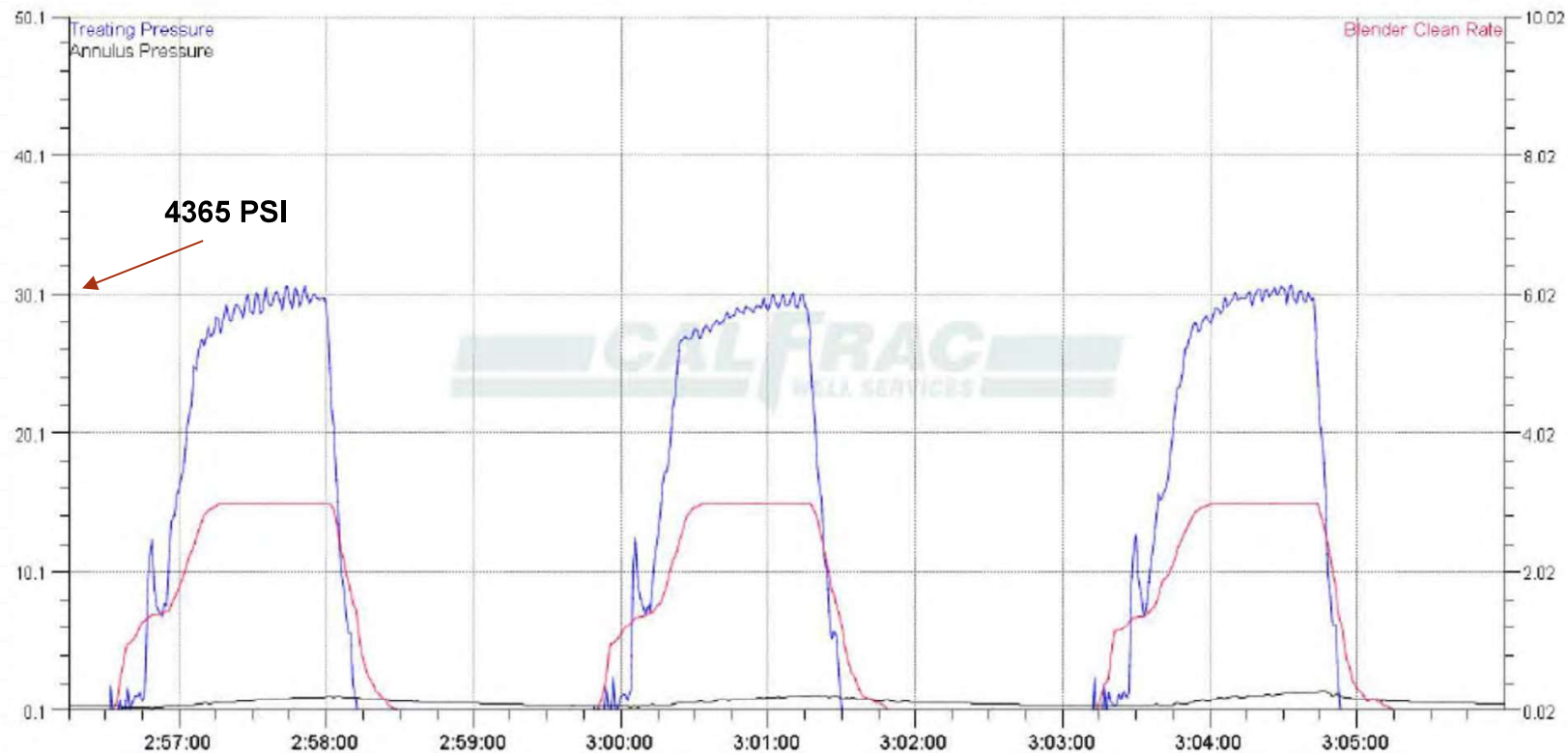
Surface Pumping Charts



- 50 stages pumped in under 4.0 hours

Expanded View

New Star Ltd 10011-28-050-04W5M



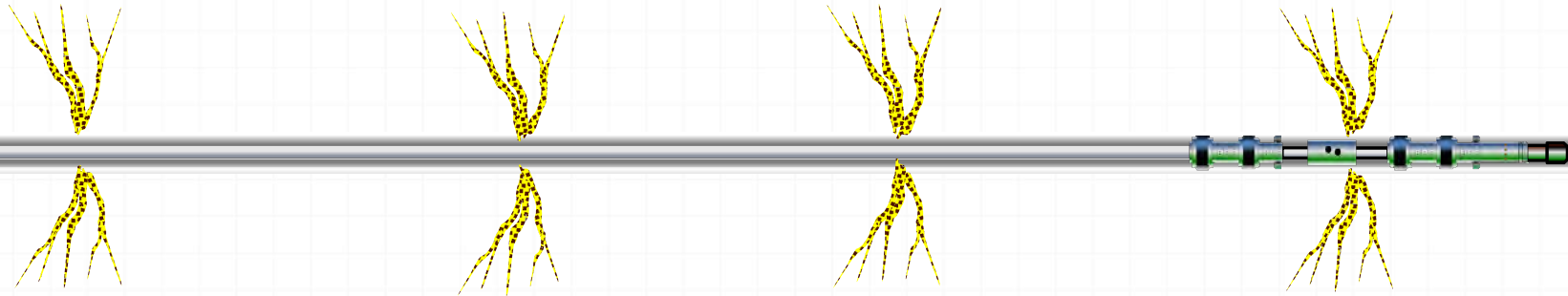
- 30 bbl/stage of 28% HCL Pumped at 19 bbl/min

*Lee Energy System Introduction Winter
2014*

Speed Squeeze Straddle System System Specification

- **Pressure Rating:** up to **10,000 psi** (differential)
- **Open Hole Size:** **6 1/8" & 6 1/4"**
- **Casing Size:** **4 1/2", 5 1/2", 7.0", 8 5/8" 9 5/8"**
- **Deployment:** **Service Rig or Coil Tubing**
- **Common Tubulars:** **2 3/8", 2 7/8", 3 1/2" & 4 1/2"**
- **Typical Stimulation Rates:**
2 to 30 bbl/min (Tubing/friction Dependent)
- **Stimulation Type:** **Acid**
- **Average Packer Spacing:** **15 to 65 feet**

Delivering the Results



- **Unlimited Stage Count**
- **Flexible Stage Location**
- **Reduced Fluid on Formation**
- **No Liner Necessary**
- **No Composite Plugs, Ball Seats or Sliding Sleeves to Purchase (or drill out required)**

Delivered At the Lowest Possible COST!